

## GENERAL CAMPUS FACILITY

### UNION BANK



### UNION BANK ATM



## GENERAL STORE



## JUICE-FRUIT SHOP AND BOOK SHOP



	Decimal	DMS	
Latitude	19.759382	19°45'33" N	
Longitude	73.768948	73°46'8" E	
2022-10-18(Tue) 12:26			27°C 81°F

**UNISEX SALOON**



**Nashik Division, Maharashtra, India**  
**Hair Salon SMBT CAMPUS Ghoti Kh,**  
**Maharashtra 422403, India**  
**Long 73.764743°**  
**Lat 19.758160°**  
**28/12/2022 01:58 PM**

 GPS Map Camera

## LAUNDRY SERVICES



## BUGGY FACILITY



# POLLUTION FREE GREEN CAMPUS



**THERE'S A NEW WAY TO GO**

**HOW TO USE**

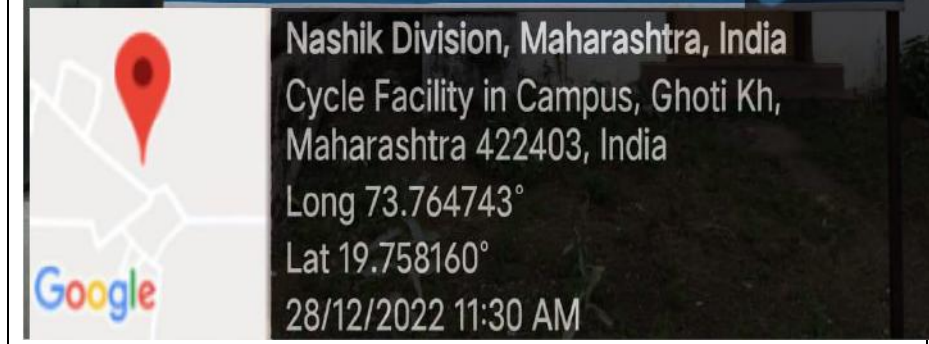
- Sign up on [www.tiltbike.com](http://www.tiltbike.com) using Google Chrome on Android or Safari on iOS
- Scan the QR code on the cycle you want to ride
- Use the pin to unlock the cycle
- Return the cycle to any station after your ride
- Tap on the "Stop Ride" button on the app to end your ride

**DO'S & DON'TS**

- Manually check all parts of the bike you have unlocked, ensure that it is maintained and safe to ride
- Stick to the left of the road, obey all traffic laws and follow traffic regulations within the SMTB campus
- Ensure that the cycle is returned to a Bicycle station after you complete your ride
- Please read the disclaimer & T&C on the app carefully before registration

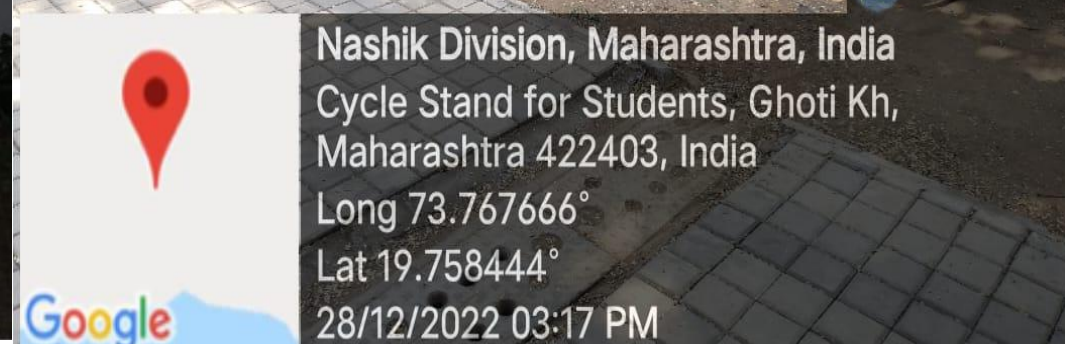
**SMTB**  
Students Maharashtra Transport Board

GPS Map Camera



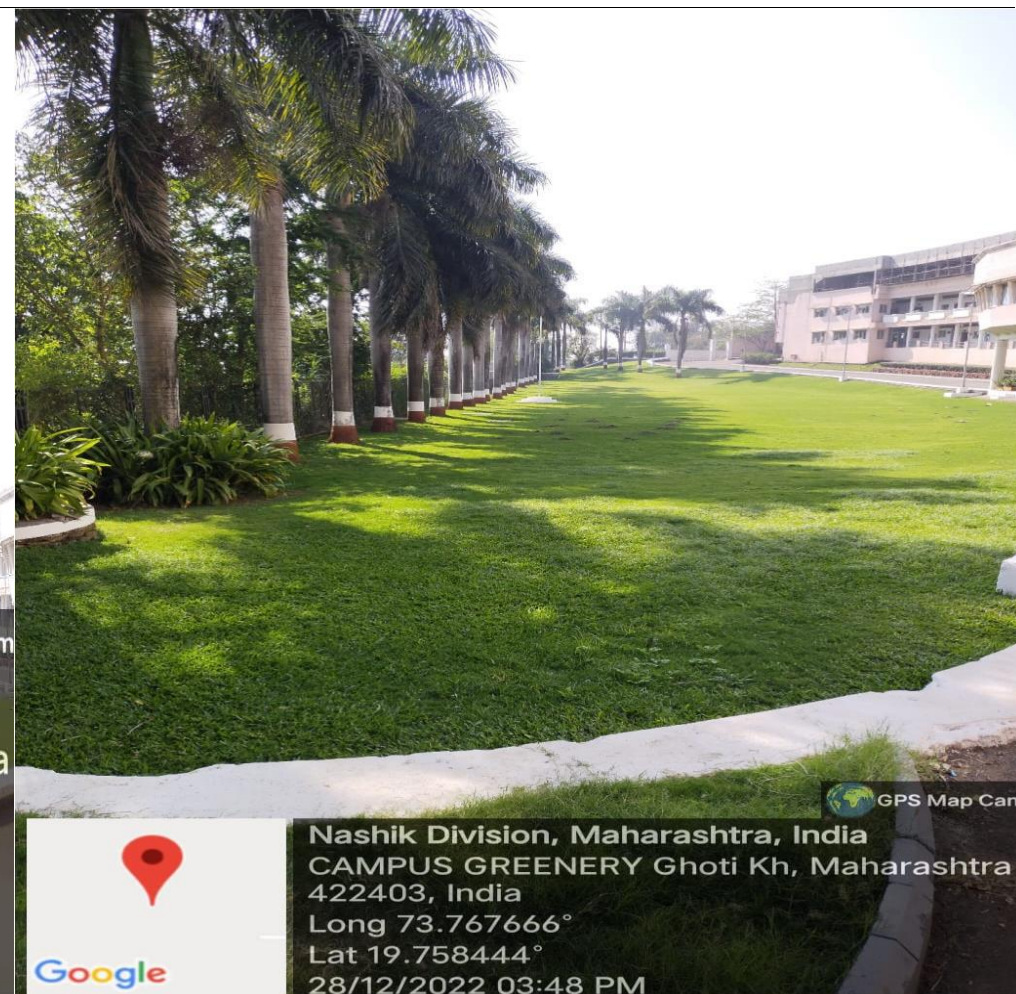
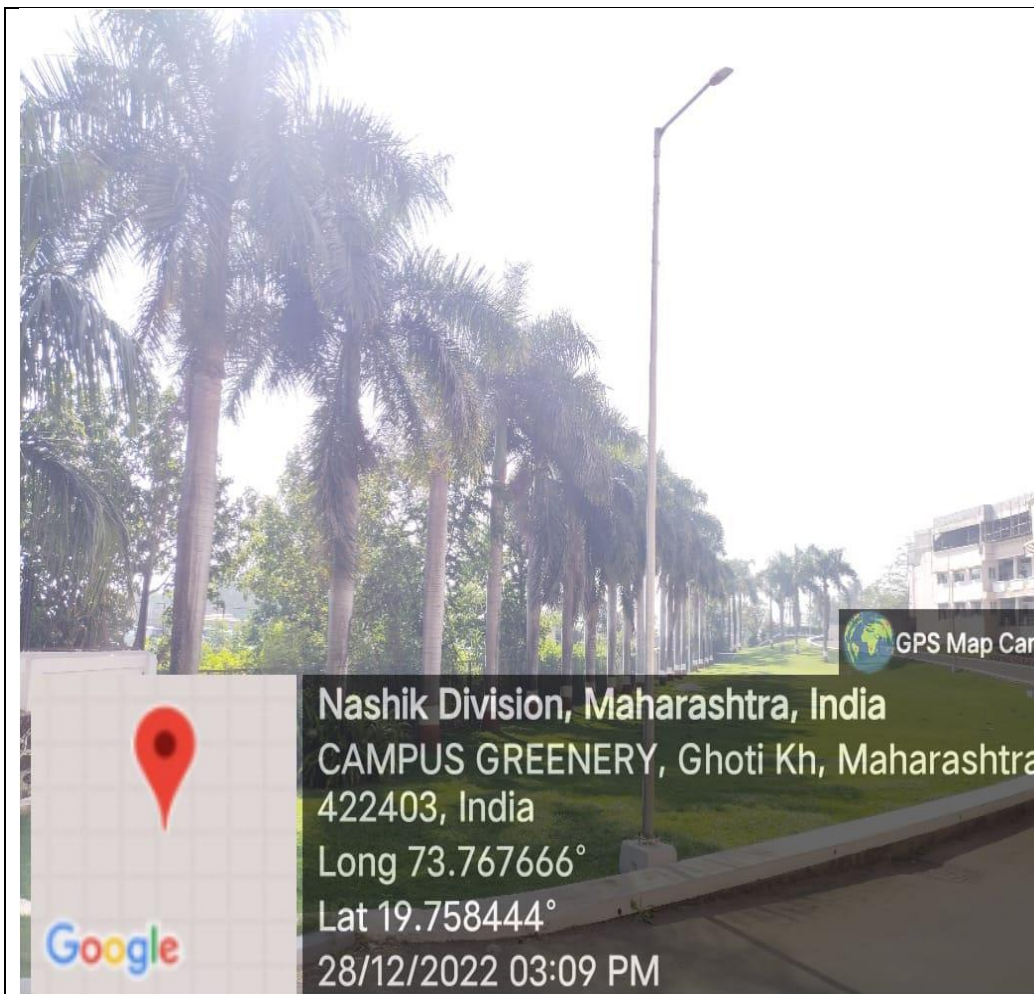
**Nashik Division, Maharashtra, India**  
Cycle Facility in Campus, Ghoti Kh,  
Maharashtra 422403, India  
Long 73.764743°  
Lat 19.758160°  
28/12/2022 11:30 AM

Google



**Nashik Division, Maharashtra, India**  
Cycle Stand for Students, Ghoti Kh,  
Maharashtra 422403, India  
Long 73.767666°  
Lat 19.758444°  
28/12/2022 03:17 PM

Google

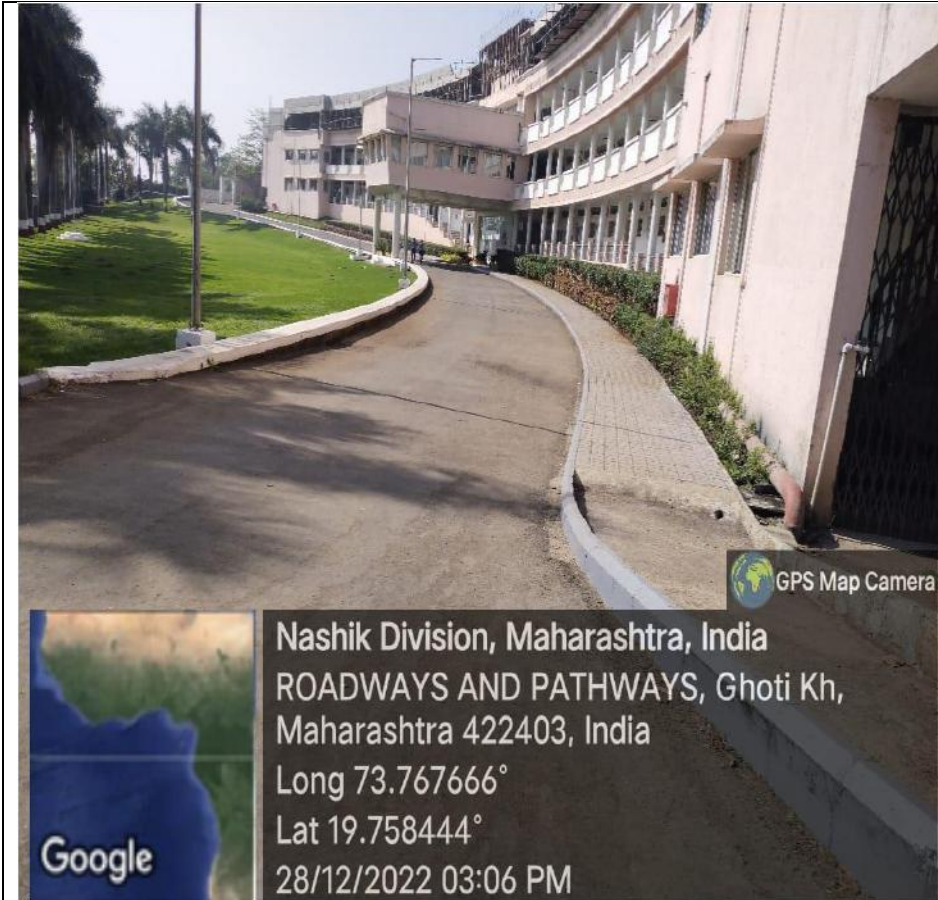




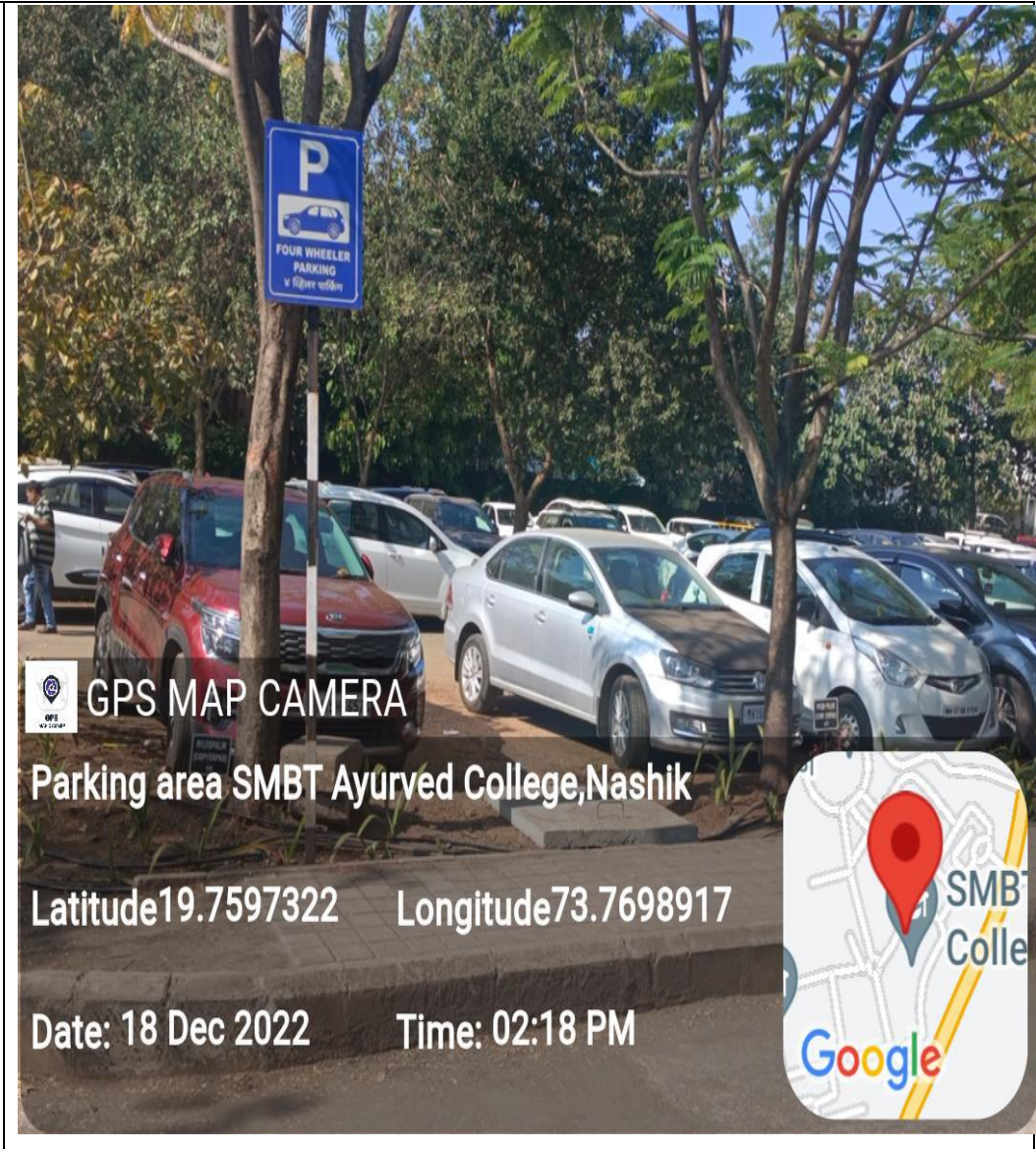
TOBACCO FREE ,PLASTIC FREE & CLEAN CAMPUS



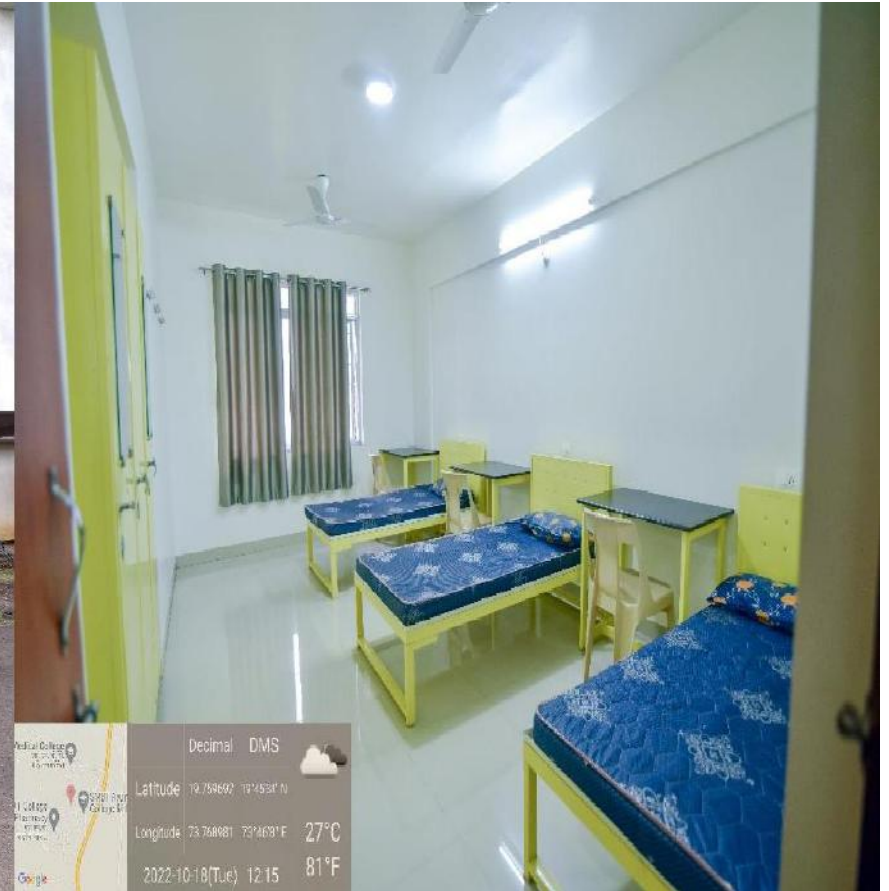
## ROAD AND PATHWAYS WITH SINAGE



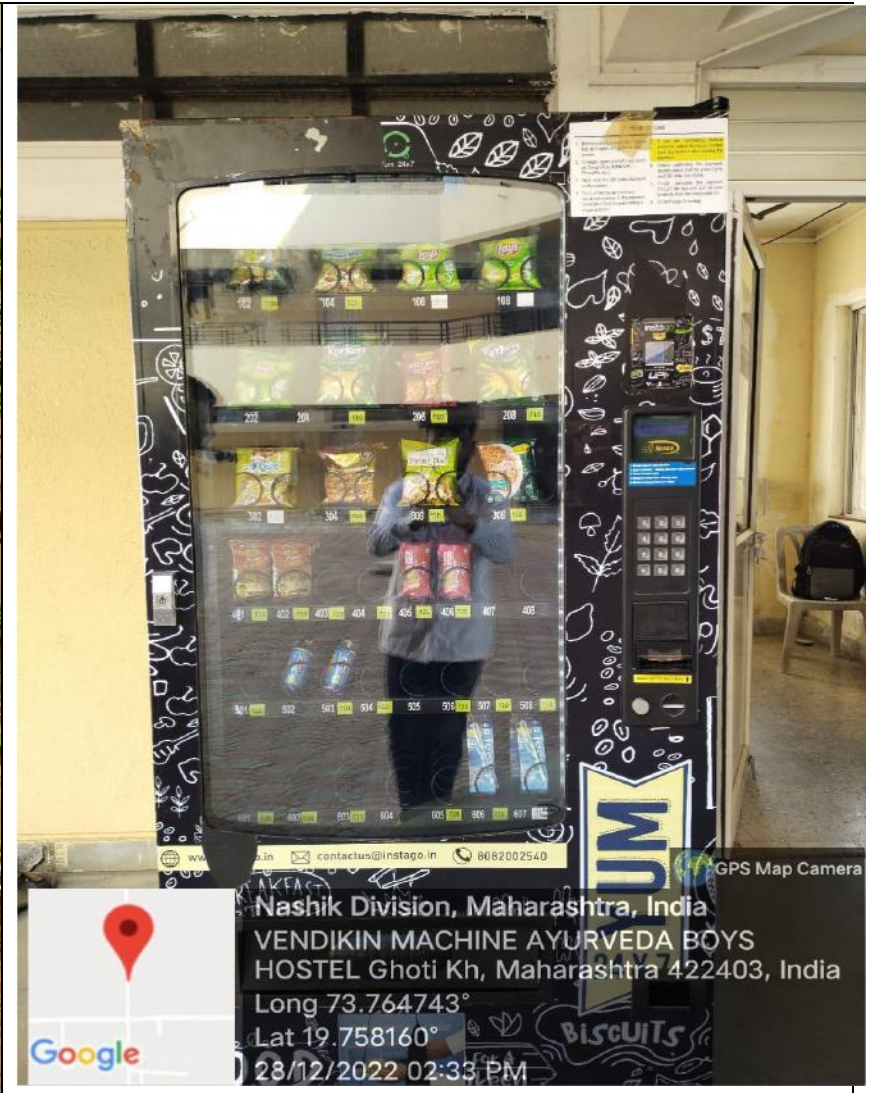
## TWO WHEELER & FOUR WHEELER PARKING



## GIRLS HOSTEL




# BOYS HOSTEL

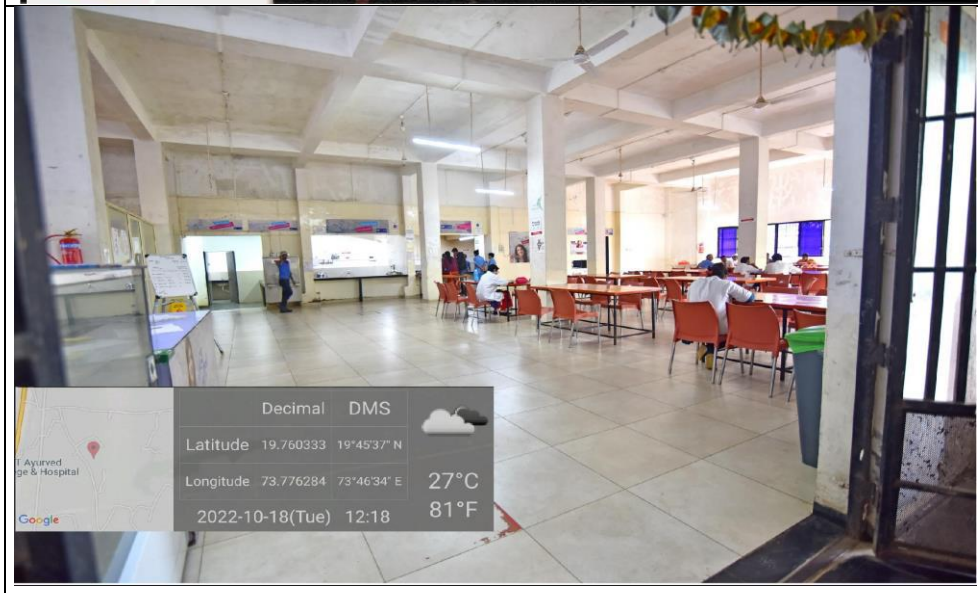


## CANTEEN



	Decimal	DMS	
Latitude	19.759905	19°45'35" N	
Longitude	73.769002	73°46'8" E	27°C
			81°F
2022-10-18(Tue) 12:16			

# CANTEEN-DRINKING WATER & SERVING SECTION-DINNING AREA- HAND WASH-

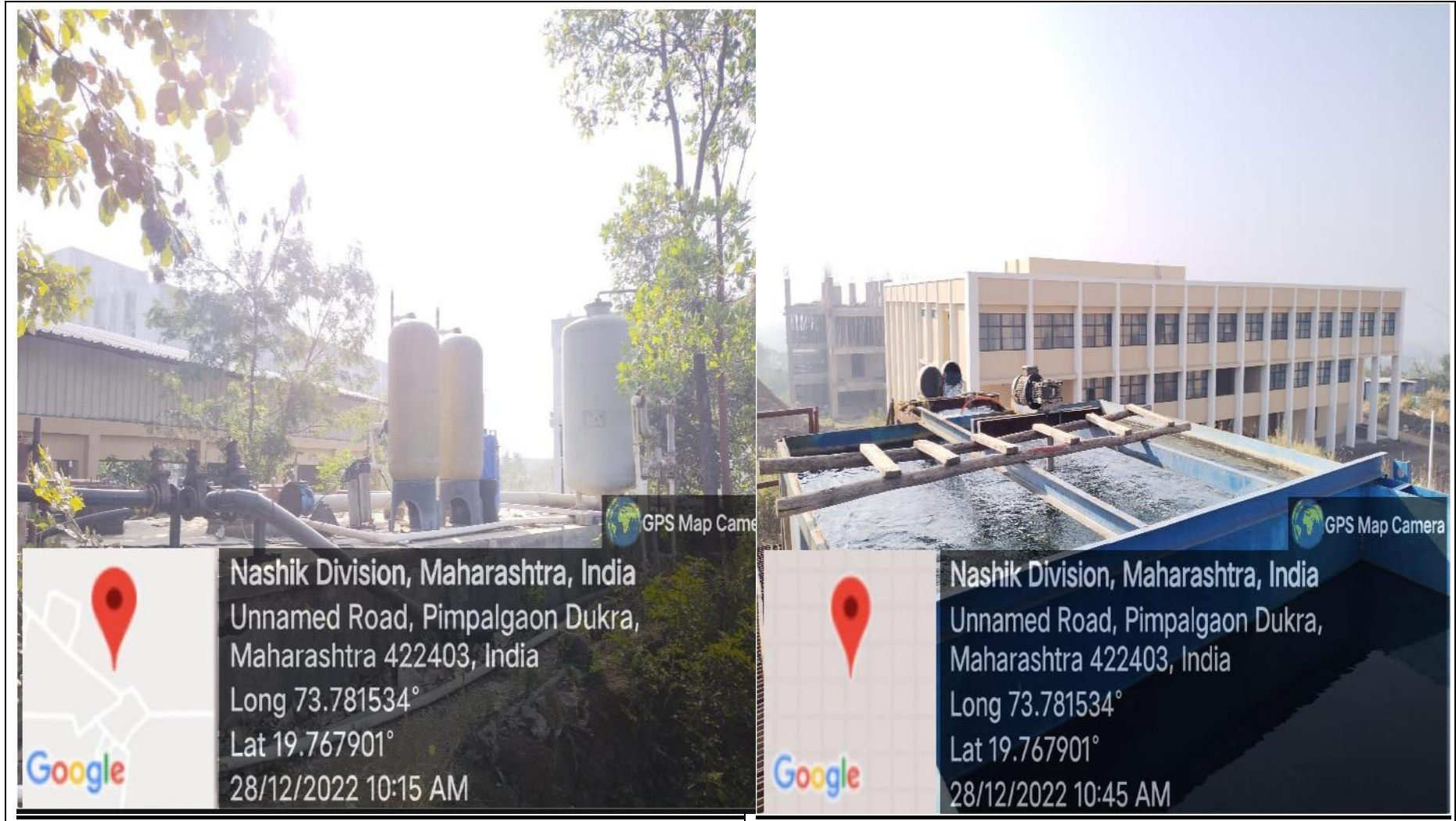


# WATER TREATMENT PLANT





## WATER PURIFICATION PLANT



**SOLAR ENERGY SYSTEM –SMBT**  
**AYURVED HOSPITAL, GIRLS & BOYS**  
**HOSTEL**



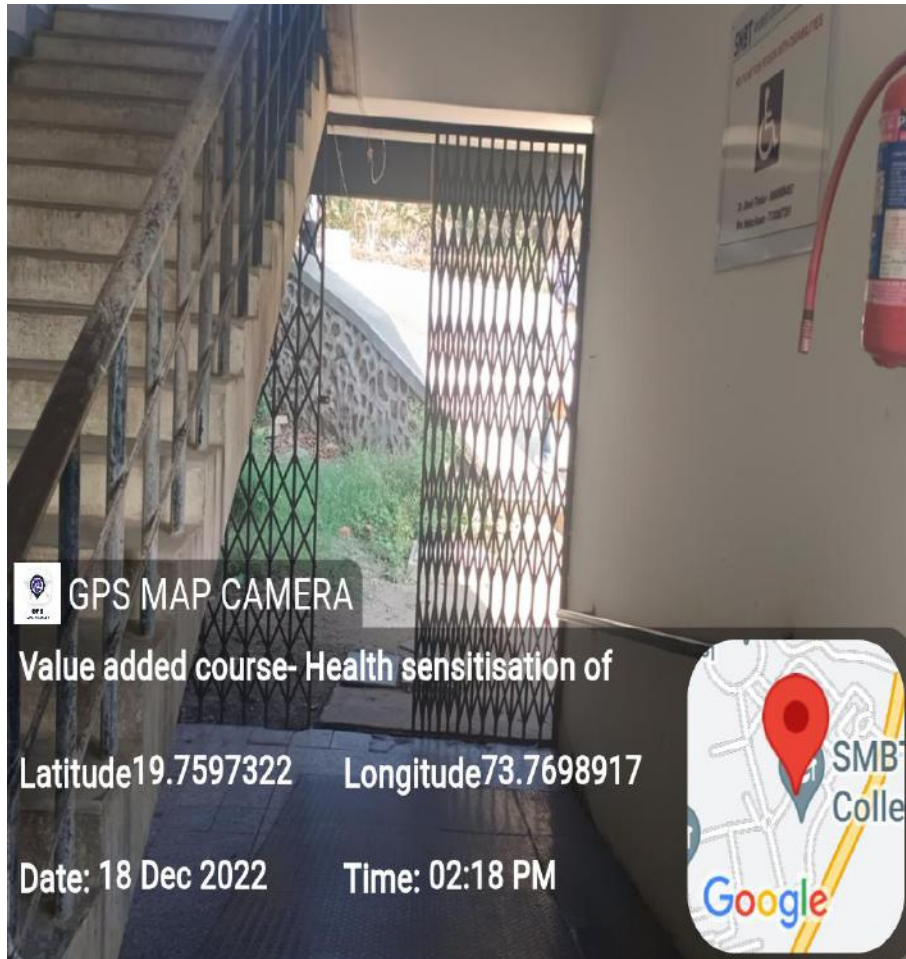
# SEWAGE TREATMENT PLANT



**SHETATALE**



**Ramp with side railing support for physically challenged**



**Drinking water**



# Toilet facility for Physically challenged

